

## Bond with Community



8<sup>th</sup> February 2017      9<sup>th</sup> February 2017      17<sup>th</sup> February 2017      23<sup>rd</sup> February 2017      17<sup>th</sup> March 2017

Introduction of the project to Haven of Hope Sunnyside School	Introduction of the project to Ma Yau Tong Villagers	Introduction of the project to Kwun Tong and Sai Kung District Councillors	1 <sup>st</sup> Community Liaison Group Meeting	Introduction of the project to Tseng Lan Shue Villagers
---	--	--	---	---

### 1<sup>st</sup> Community Liaison Group (CLG) Meeting

CLG has been officially established by CEDD, the consultant and the contractor. The 1<sup>st</sup> CLG meeting was held at Shun Lee Estate Community Centre Hall on 23<sup>rd</sup> February 2017 so as to provide the latest project information to the stakeholders and to collect their views on the works arrangement. CLG members comprise Kwun Tong and Sai Kung District Councillors, representatives from nearby residents, organizations and schools. During the meeting, participants expressed their valuable opinions to CEDD and the contractor for consideration and follow-up.

### Treasure Every Opinion

To maintain effective communication, CEDD, the consultant and the contractor visited related organizations regularly to introduce the project, and invited district council members for site visit to get them familiar with the site operation.



Mr. LEUNG Chung Lap, Deputy Project Manager (NTE), gave a briefing on Development of Anderson Road Quarry Site project to Kwun Tong District Councillors and resident representatives on 16<sup>th</sup> May 2017.



Resident representatives from On Tat Estate submitted a letter to Mr. Leung requesting to strengthen the environmental mitigation measures.



Mr. Leung Yiu Fu, Chief Resident Engineer from the consultant, briefed the construction activities to Kwun Tong District Councillors.



### Proactive Participation in Community

To stay close contact with communities nearby, CEDD, the consultant and the contractor attended the Open Day of Haven of Hope Sunnyside School on 28<sup>th</sup> April 2017.

## Information and Enquiries

You are welcome to contact us with your valuable opinions or suggestions:	24- hour hotline	Contract No. NE/2016/01 ( Site Formation and Infrastructure Works ) <b>9669 7120</b>	Contract No. NE/2016/05 ( Pedestrian Connectivity Facilities ) <b>6395 3684</b>
	E- mail	<a href="mailto:spro@arqaecom.com">spro@arqaecom.com</a>	<a href="mailto:ne201605@gmail.com">ne201605@gmail.com</a>

## Development of Anderson Road Quarry Site

Welcome to the second issue of Development of Anderson Road Quarry Site Newsletter. In this newsletter, we will provide the project progress and the relevant information. We also welcome your feedback and suggestions on the project.

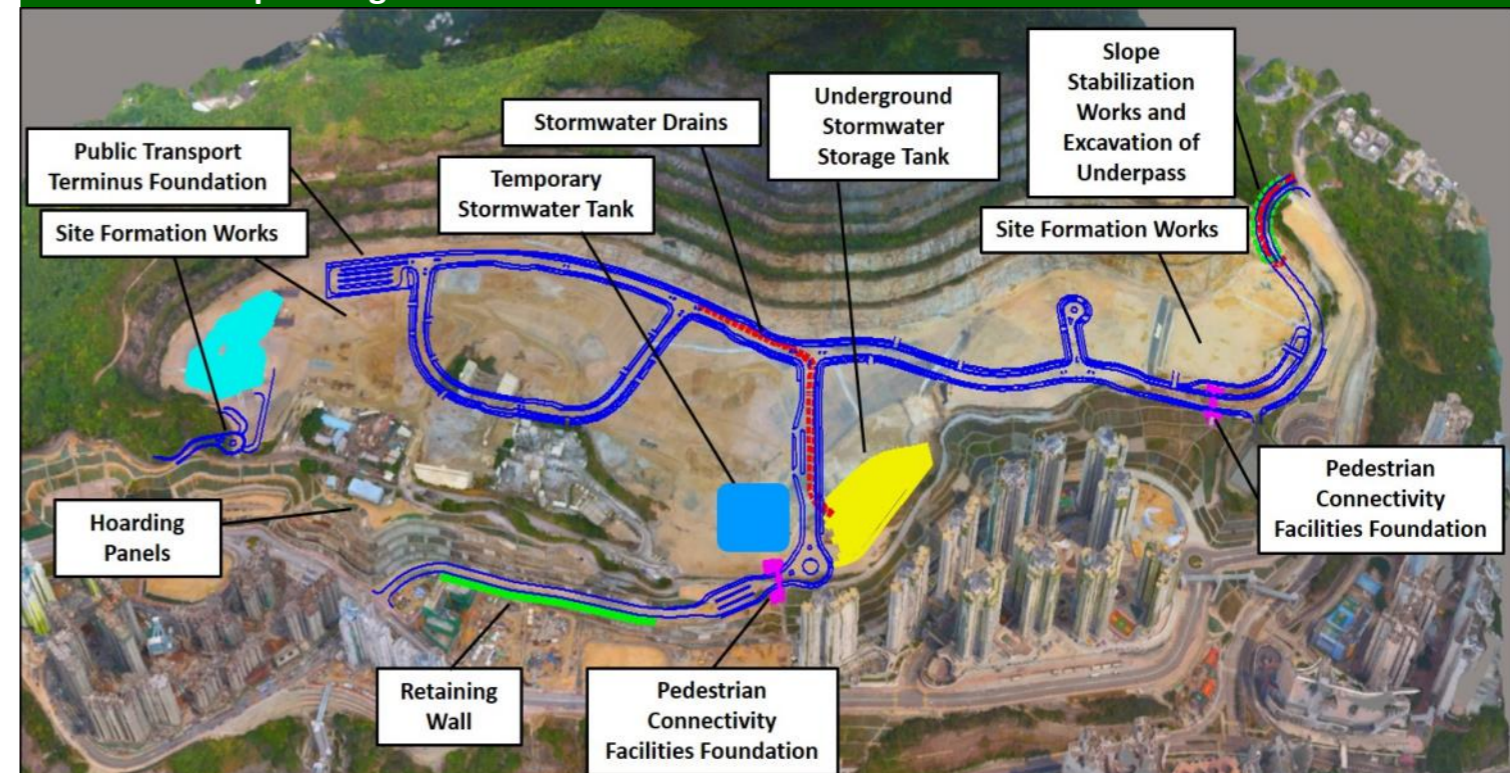
## Project Progress

The site formation and infrastructure works under Contract No. NE/2016/01 commenced on 21<sup>st</sup> December 2016 and proceeded smoothly. The project is expected to be completed by 2022.

In addition, the pedestrian connectivity facilities works Phase 1 and the bus-to-bus interchange under Contract No. NE/2016/05 also commenced in March 2017. The project is expected to be completed in phases by 2020.

### Contract No. NE/2016/01

#### Current and Upcoming Construction Activities in the Next Three Months



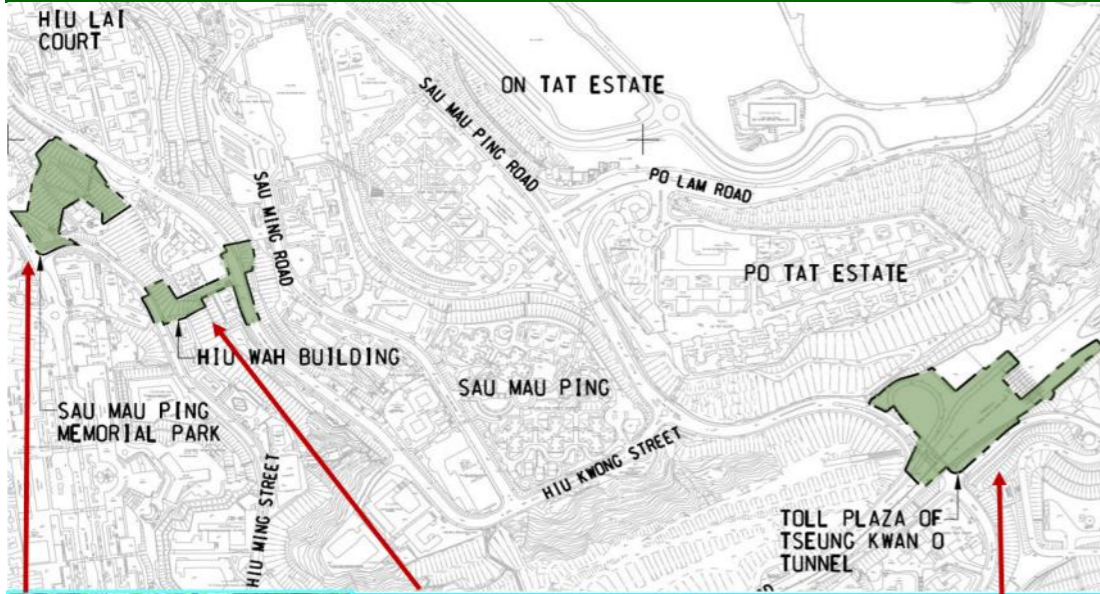
### The contractor is conducting the following works:



1. Tree survey and tree risk assessment
2. Erection of temporary hoarding panels
3. Construction of temporary stormwater tank and drainage channels
4. Bored pile construction
5. Site formation works



**Contract No. NE/2016/05**  
**The Pedestrian Connectivity Facilities Works Phase 1 and the Bus-to-Bus Interchange**



**Making it easier to get around**

The first phase of pedestrian connectivity facilities near Sau Mau Ping Memorial Park and Hiu Wah Building include footbridges, lift towers, escalators, etc. Upon completion of the project, it will provide more secure and convenient access facilities for nearby residents.

The works of bus-to-bus interchange near the toll plaza of Tseung Kwan O Tunnel (Kowloon Portal) includes bus berths, bus shelters, etc. Upon completion of the works, it will facilitate the use of bus services to and from Tseung Kwan O, Anderson area, Sau Mau Ping and Po Tat Estate.

**Major Temporary Traffic Arrangements (TTA)**

To facilitate the construction, the temporary traffic arrangements below have been implemented in phases. The temporary traffic arrangements have been endorsed by relevant departments in order to ensure the traffic impact arising from the construction could be minimized as far as possible:

Road	TTA	Purpose
1. Anderson Road	Permanent closure	For land use in the development area
2. Po Lam Road	Temporary diversion	For construction of underpass connecting to

**Permanent closure of Anderson Road (On Sau Mau Ping Road will be used to connect to New Clear Water Bay Road/Po Lam Road)**

**Temporary diversion at Po Lam Road**

**Environmental Mitigation Measures**



**Air Quality Monitoring Location**

**Noise Monitoring Location**

**Good Site Management**

Vehicle wheel-washing facilities have been installed at site exits to prevent dust from being brought away from the site.

Water spraying has been arranged on site to minimize dust nuisance.

Noise monitoring device has been set up on site.

Mobile noise barrier has been set up on site.

Air quality monitoring systems have been installed.

**Usage of Environmentally-friendly Energy**

We are exploring the use of solar panels on the surface of the rock slope, and we are carrying out a pilot test for installing solar panels at site office and on the rock slopes surface, to generate electricity to support facilities of the site offices.



**Knowledge & Tips: What is Bored Pile?**

**What is Bored Pile?**

Bored pile is a type of pile, in which bore holes are drilled by mechanical method, with reinforced concrete put in place.

**Advantage:**

It generates less construction noise and vibration, which can minimize the nuisance to the nearby residents.

**Anderson Road**

**Po Lam Road**

**Sau Mau Ping Road**

Location of current Bored Pile Construction (large-diameter)